

Installing Hard Drive

Parts You'll Need to Remove

- Top Bezel
- Bottom Bezel
- Hard Drive

Tools You'll Need


Flat-Head Screwdriver
Spudger
#00 Phillips Screwdriver



To continue, click the Begin Installation button below. Before you start, you'll need the tools shown to the bottom left. If you don't have some of the tools, you can buy the tools in bold text **from us** or you can find

them at your favorite local hardware store. For your information, the list to the left contains the components you'll be removing before you can access your part.

[Begin Installation](#) 

 iFixit is not responsible for any damages to your device, including data loss. Computer or iPod disassembly and part installation is at your own risk. This Guide offers only suggestions for taking apart your device. The components inside your computer or iPod are highly sensitive. Always ground yourself by using an **ESD wrist strap** or by touching a metal object while handling sensitive electronics.

[Return to Contents](#)


iFixit also sells iPod parts and upgrades.

© 2006 iFixit




Top Bezel

Part #: PBF9606

 Before opening your iPod, ensure that the hold switch is in the locked position.

- Carefully insert a small flathead screwdriver in the seam between the metal casing and white plastic top. Use the screwdriver to pry up the white plastic top bezel. Be careful not to damage the soft plastic with your screwdriver.

 The top bezel is held on with an adhesive, so it may be necessary to pry up in several different locations to free the part.

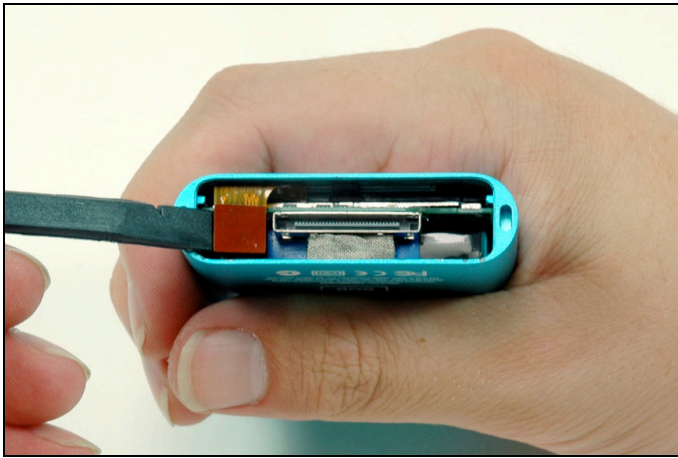
- Lift the top bezel off of the iPod.



Bottom Bezel


Part #: PBF9607

- Carefully insert a small flathead screwdriver in the seam between the metal casing and white plastic bottom. Use the screwdriver to pry up the white plastic bottom bezel. Be careful not to damage the soft plastic with your screwdriver.
- Use a flathead screwdriver to pry out the metal retaining bracket beneath the bottom bezel. You can free the bracket by first pushing in the metal arms on the corners and then lifting the bracket.
- Lift the metal retaining bracket out of the iPod.



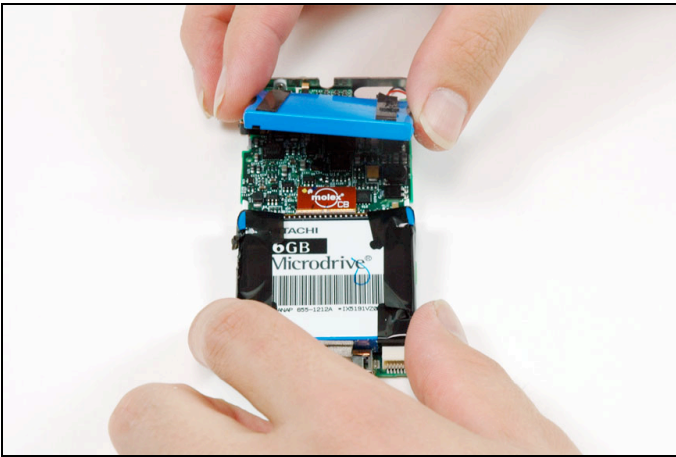
Hard Drive

Part #: 4 GB: PBF9611 6 GB: PBF9613

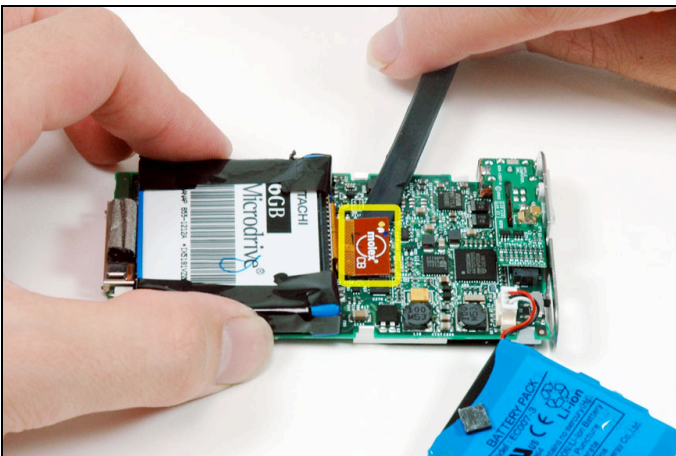
- Use a spudger or the tip of your finger to carefully disconnect the orange click wheel ribbon from the logic board.
- ✗ Remove the two #00 Phillips screws securing the headphone jack to the casing.
- Carefully slide the iPod out of its casing by pushing on the logic board near the bottom edge of the click wheel.
-  Do not pull on the headphone jack board at the top of the iPod, as the connector to the logic board is fragile.



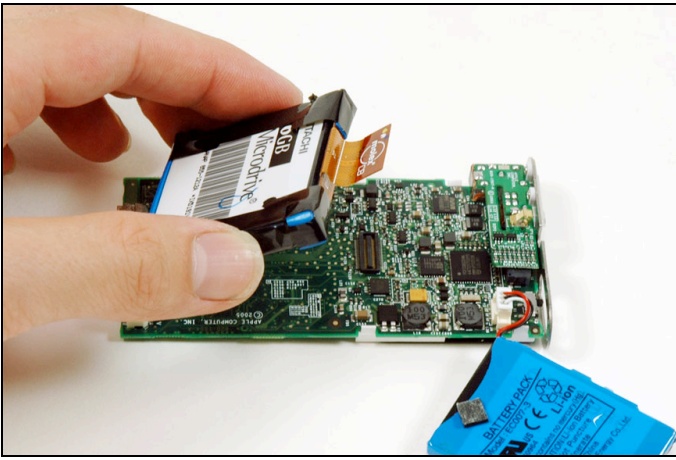
- After pushing the logic board out sufficiently, gently grasp the logic board on either side of the display, and continue to slide the iPod out of its casing.



- Lift the battery off of the logic board and lay it to the side of the iPod.



- Use a spudger or the tip of your finger to carefully disconnect the orange hard drive ribbon from the logic board.



- Lift the hard drive out of the iPod.